

Imperial Heritage 4★

Valid From 01 Apr - 30 Jun 2020



Imperial Deluxe	Adult			Child		Extension		
	Single	Twin	3rd Adult	With Bed	No Bed	Sgl/Twin	Extra Bed	Chd B'fast
Sun - Thur	109	79	N/A	N/A	55	65	N/A	6
Fri & Sat / School Holidays	119	85			59	69		
Peak	149	105			69	85		

Heritage Deluxe	Adult			Child		Extension		
	Single	Twin	3rd Adult	With Bed	No Bed	Sgl/Twin	Extra Bed	Chd B'fast
Sun - Thur	125	85	89	85	55	75	35	6
Fri & Sat / School Holidays	135	89	95	89	59	79		
Peak	159	109	99	95	69	95		

School Holidays: 30 May - 28 Jun | Peak: 01, 24 - 25 May

Package Include:

Tourcode: MKZFE

- ~ Two way Coach Transfer Singapore - Hatten Coach Bay - Singapore by SVIP 28 - 40 Seater Coach
- ~ One night accommodation at Imperial Heritage Hotel Melaka with Breakfast

Package Exclude:

- ~ Tourism Tax: MYR10 per room per night (Pay upon check-in)

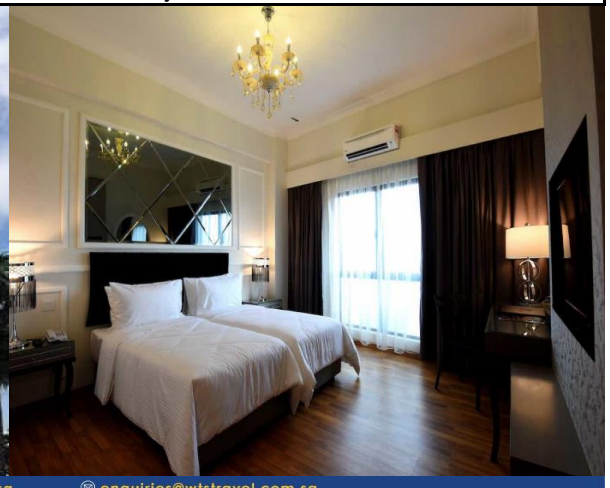
Update by JT, 06 Mar

Remark:

- PZ Transfer to 2nd Link as and when necessary
- Coach and Accommodation is subjected to availability

Optional Coach insurance @ S\$2.50 Per Adult / Child

Coach Schedule	Please kindly assemble at Pick up point 30 Minutes before departure	
Singapore - Melaka	0700	Our Tampines Hub Coach Bay
	0730	Singapore Flyer WTS Counter # 01-06D
	0800	Jurong East Venture Avenue No. 5 Bus Stop
Melaka - Singapore	1500	Assemble at Hatten Hotel Coach Bay



[wtstravel](https://www.wtstravel.com)
[wtstravel.sg](https://www.wtstravel.sg)
[wtstravel.com.sg](https://www.wtstravel.com.sg)
enquiries@wtstravel.com.sg

OUR OUTLETS:

NORTH: #B2-136/7 Northpoint City | #03-10 Sun Plaza | #05-19 Causeway Point
WEST: #04-14 Lot One | #04-06 Bukit Panjang Plaza | #03-25D/E Jurong Point | #B1-59 Bukit Timah Plaza
EAST: #04-04 Compass One | #B2-15 Waterway Point | #04-11 Century Square | #B1-38 Our Tampines Hub
CENTRAL: #B1-49 AMK Hub
CORPORATE ADDRESS: 29 First Lak Yang Road Singapore 629736



BOOK NOW:
6466 8558

WTstravel

Our Awards: SINGAPORE QUALITY CLASS SERVICE, ENTERPRISE, A member of: NATAK